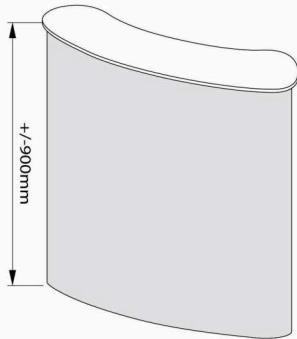
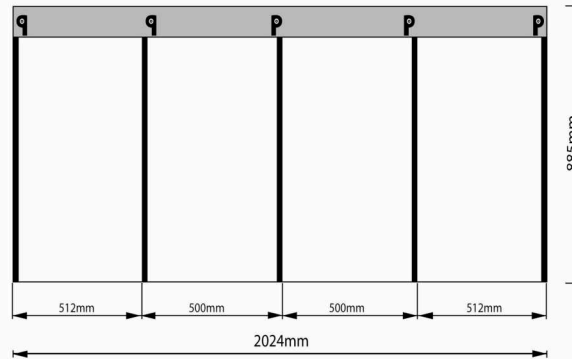


Front View - Stand Size



Graphic Panel Size (2024mm X 885mm)



— Magnetic Tape

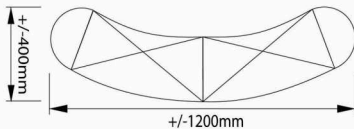
Remarks:

1. Single piece of graphic panel is required.
1. Above drawing shows positioning of magnetic tape and please DO NOT cut the graphic accordingly.

Printed panel size
2024mm x 885mm

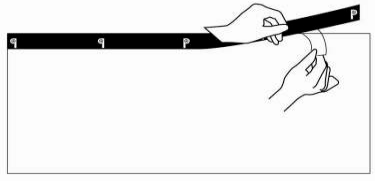
Central 1000mm
visible from front

Top View - Stand Size

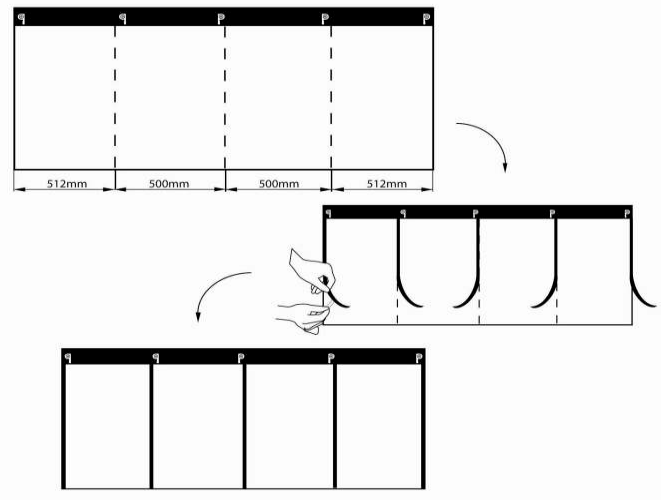




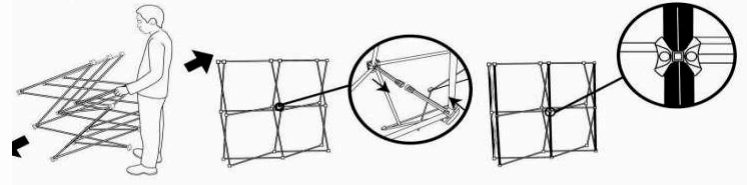
1. Align the header to the top edge of the graphic. Once aligned, slowly remove the protection film at the back of the header.



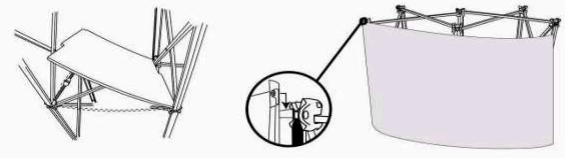
2. Follow the spacing distance from Mesa's line drawing, and mark the positions of mag tapes. Once marked, align mag tapes into its position and slowly remove the protection film at back of tape, to attach mag tapes to the graphic.



3. Expand the frame and ensure all magnetic locks are tightly connected together. Then, attach the channel bars to the frame.



4. Place the shelves in with an angle. Once all four shelves are in place, you can attach the graphic by connecting the floating magnets on the header board to the hubs. Also, ensure the magnetic tapes is attached the channel bar smoothly.



5. Place the tabletop on tops of the frame, and ensure the hubs went into the indents underneath the tabletop, so it will sit firmly.

